

1.05.2023

C-oil mineral oil



Our Goal Is To Do The Best Of The Best

GASOLINE ENGINE OILS

C-Oil 0W-30

Unique Performance Full Synthetic Engine Oil

Typical Physical And Chemical Characteristics

Extra ordinary performed engine oil for ultimate version of gasoline and diesel engine vehicles, produced by full synthetic base oils.	Density, 15°C, kg/L	K.Viscosity, 40°C, mm²/s	K.Viscosity, 100°C, mm²/s	Viscosity Index	Flash Point, °C
Provides extra lubricating and high protection in new generation gasoline and diesel engines	ASTM D 4052	ASTM D 445	ASTM D 445	ASTM D 2270	ASTM D 92
	0,855	60,4	10,7	161	236

Performance Specifications

SAE 0W-30

C-Oil 5W-30

Unique Performance Full Synthetic Engine Oil

Typical Physical And Chemical Characteristics

In accordance with modern engines long term oil changes, improved synthetic technology by special additives. Suitable for running four seasons, all temperatures, high revolutions per minute gasoline and diesel engines	Density, 15°C, kg/L	K.Viscosity, 40°C, mm²/s	K.Viscosity, 100°C, mm²/s	Viscosity Index	Flash Point, °C
	ASTM D 4052	ASTM D 445	ASTM D 445	ASTM D 2270	ASTM D 92
	0,863	56,5	9,6	155	207

Performance Specifications

SAE 5W-30 API

C-Oil 0W-40

Unique Performance Full Synthetic Engine Oil

Typical Physical And Chemical Characteristics

Fully synthetic, extra avoiding corrosion and improved high cleaning power formulation in four seasons and all road conditions. Provides high performance in gasoline, diesel, turbocharged, natural aspirated and multi valve all gasoline engines also LPG system running vehicles	Density, 15°C, kg/L	K.Viscosity, 40°C, mm²/s	K.Viscosity, 100°C, mm²/s	Viscosity Index	Flash Point, °C
	ASTM D 4052	ASTM D 445	ASTM D 445	ASTM D 2270	ASTM D 92
	0,846	79,2	13,6	177	236

Performance Specifications

SAE 0W-40 API

C-Oil DPF FULL 5W-30

Premium Long Life Full Synthetic Engine Oil	Typical Physical And Chemical Characteristics				
An advanced performance synthetic engine oil, especially in the new generation of diesel engine particulate filter is manufactured for excellent lubrication and corrosion prevention. Additional additives and synthetic technology with diesel and gasoline engines can be used safely in all for seasons	Density, 15°C, kg/L	K.Viscosity, 40°C, mm²/s	K.Viscosity, 100°C, mm²/s	Viscosity Index	Flash Point, °C
	ASTM D 4052	ASTM D 445	ASTM D 2270	ASTM D 92	ASTM D 97
	0,85	11,6	161	230	-39
Performance Specifications	SAE 5W-30 API				
C-Oil SAE 5W-30					
Unique Performance Synthetic Engine Oil	Typical Physical And Chemical Characteristics				
In accordance with modern engines long term oil changes, improved synthetic technology by special additives. Suitable for running four seasons all temperatures, high revolutions per minute gasoline and diesel engines .	Density, 15°C, kg/L	K.Viscosity, 40°C, mm²/s	K.Viscosity, 100°C, mm²/s	Viscosity Index	Flash Point, °C
	ASTM D 4052	ASTM D 445	ASTM D 445	ASTM D 2270	ASTM D 92
	0,863	55,7	9,56	155	206
Performance Specifications	SAE 5W-30 API				
C-Oil SAE 5W-40					
Extra Performance Full Synthetic Engine Oil	Typical Physical And Chemical Characteristics				
Synthetic engine oil, formulated by hi-tech synthetic base oils and extra qualified additives. Provides extra performance in gasoline, diesel,LPG running natural absorbed, injection, turbocharged, sedon and light commercial vehicles	Density, 15°C, kg/L	K.Viscosity, 40°C, mm²/s	K.Viscosity, 100°C, mm²/s	Viscosity Index	Flash Point, °C
	ASTM D 4052	ASTM D 445	ASTM D 445	ASTM D 2270	ASTM D 92
	0,857	86,2	14,3	172	230
Performance Specifications	SAE 5W-30 API				
C-Oil 5W-40					
Full Synthetic Engine Oil	Typical Physical And Chemical Characteristics				
Full synthetic engine oil, ensures high performance and efficient protection by its ultimate synthetic technological formulation. Used for every new generation gasoline and light commercial vehicles including all engines of gasoline and diesel	Density, 15°C, kg/L	K.Viscosity, 40°C, mm²/s	K.Viscosity, 100°C, mm²/s	Viscosity Index	Flash Point, °C
	ASTM D 4052	ASTM D 445	ASTM D 445	ASTM D 2270	ASTM D 92
	0,859	94	14,5	161	226
Performance Specifications	SAE 5W-40 API SL/CF				
C-Oil 10W-40					
High Performance Semi-Synthetic Gasoline Engine Oil	Typical Physical And Chemical Characteristics				
Improved specially by ultimate synthetic technology gasoline engine oil effective lubricating in all climates and road conditions with its unique protection. Used in new-generation or ancient all gasoline engines besides, turbocharged or natural absorbed, non heavy duty diesel engines.	Density, 15°C, kg/L	K.Viscosity, 40°C, mm²/s	K.Viscosity, 100°C, mm²/s	Viscosity Index	Flash Point, °C
	ASTM D 4052	ASTM D 445	ASTM D 445	ASTM D 2270	ASTM D 92
	0,882	96,5	14,7	157	216
Performance Specifications	API SL/CF SAE 10W-40				
C-Oil Gasoline 15W-40					
High Quality Gasoline Engine Oil	Typical Physical And Chemical Characteristics				
High performance engine oil fortified with high quality mineral base oils and advanced technology additives for strong protection and effective lubrication. Provides high-performance in gasoline and diesel engines of passenger cars, and LPG systems.	Density, 15°C, kg/L	K.Viscosity, 40°C, mm²/s	K.Viscosity, 100°C, mm²/s	Viscosity Index	Flash Point, °C
	ASTM D 4052	ASTM D 445	ASTM D 445	ASTM D 2270	ASTM D 97
	0,882	110,7	15,5	140	228
Performance Specifications	SAE 15W-40 API				
C-Oil STAND UP 20W-50					
High Quality Engine Oil	Typical Physical And Chemical Characteristics				

It is high-performance engine oil that especially improved by modern additives and forms film layer on the surface of motor. Provides high-performance in gasoline and diesel engines of passenger cars, and LPG systems.	Density, 15°C, kg/L	K.Viscosity, 40°C, mm²/s	K.Viscosity, 100°C, mm²/s	Viscosity Index	Flash Point, °C
	ASTM D 4052	ASTM D 445	ASTM D 445	ASTM D 2270	ASTM D 97
	0,88	167	19	120	226

Performance Specifications SAE 20W-50 API

MOTOCYCLE OILS

C-Oil 4T 10W-40

Four-Stroke Semi-Synthetic Motorcycle Oil

Typical Physical And Chemical Characteristics

Four- stroke semi-synthetic motorcycle oil that provides excellent protection in terms of the all working conditions with superior performance.Suitable for all four stroke air or water cooled motorcycles in wide -range conditions.Meets with. European And Japanese motorcycle manufacturers of API SG JASO MA Standarts and specifications	Density, 15°C, kg/L	K.Viscosity, 40°C, mm²/s	K.Viscosity, 100°C, mm²/s	Viscosity Index	Flash Point, °C
	ASTM D 4052	ASTM D 445	ASTM D 445	ASTM D 2270	ASTM D 92
	0,87	98	14,6	157	230

Performance Specifications SAE 10W-40 API

C-Oil SUPER SYNTHETIX 2T

Superior Performance Full Synthetic Two-Stroke Engine Oil

Typical Physical And Chemical Characteristics

Fully synthetic engine oil designed for two stroke motorcycles where required high power and outstanding performance in extreme conditions. Suitable for use in all type of air and water-cooled, high power two-stroke motorcycle engines.	Density, 15°C, kg/L	K.Viscosity, 100°C, mm²/s	Viscosity Index	lash Point, °C	Pour Point, °C
	ASTM D 4052	ASTM D 445	ASTM D 2270	ASTM D 92	ASTM D 97
	0,882	8,6	152	104	-33

Performance Specifications API TC

C-Oil 4T 15W-40

Extra Performance Four-Stroke Motorcycle Engine Oil

Typical Physical And Chemical Characteristics

4T 15w-40 is semi-synthetic based four stroke motorcycle engine oil specially formulated to provide strong protection and outstanding performance at the hardest conditions. Recommended for all type of air and watercooled engines of four-stroke motorcycles and scooters where an API SG and JASO MA level performance is recommended.	K.Viscosity, 40°C, mm²/s	K.Viscosity, 100°C, mm²/s	Viscosity Index	Flash Point, °C	
	ASTM D 445	ASTM D 445	ASTM D 2270	ASTM D 92	
	160,5	14,3	137	228	



Performance Specifications SAE 15W-40 API

C-Oil SUPER 2T

High Performance Two-Stroke Engine Oil

Typical Physical And Chemical Characteristics

Formulated for two cycled engines selected high quality mineral base oils with addition of proper agents. Recommendations and instructions of manufacturers should be followed for proper fuel and oil mixture ratio. Suitable for use all two stroke motorcycles, hand saws, small generators, pumps cooled by air and operates with lead or unleaded gasoline.	Density, 15°C, kg/L	K.Viscosity, 100°C, mm²/s	Viscosity Index	Flash Point, °C	
	ASTM D 4052	ASTM D 445	ASTM D 2270	ASTM D 92	
	0,89	8,7	98	258	

Performance Specifications API TC

DIESEL ENGINE OILS

C-Oil DPF FULL 5W-40

Premium Longlife Full Synthetic DPF Engine Oil

Typical Physical And Chemical Characteristics


Superior performance synthetic engine oil, especially in the new					
--	--	--	--	--	--


generation of diesel engine particulate filter is manufactured for excellent	Density, 15°C, kg/L	K.Viscosity, 100°C, mm²/s	Viscosity Index	Flash Point, °C	Pour Point, °C
lubrication and corrosion prevention. Additional additives and synthetic	ASTM D 4052	ASTM D 445	ASTM D 2270	ASTM D 92	ASTM D 97
technology with diesel and gasoline engines can be used safely in all for seasons	0,86	14,2	163	228	-39
Performance Specifications	SAE 5W-40 API				
C-Oil 10W-30					
High Performance Diesel Engine Oil	Typical Physical And Chemical Characteristics				
High performance diesel engine oil, formed by synthetic technology	Density, 15°C, kg/L	K.Viscosity, 40°C, mm²/s	K.Viscosity, 100°C, mm²/s	Viscosity Index	Flash Point, °C
with long term oil changes property. Used confidently in modern turbochargers	ASTM D 4052	ASTM D 445	ASTM D 445	ASTM D 2270	ASTM D 92
light commercial vehicle up to in hard roads and offroad running vehicles	0,879	75,1	11,45	147	226
Performance Specifications	SAE 10W-30 API				
C-Oil DIESEL SEA 10W-40					
Class Quality Extra Long Life Semi Synthetic Heavy Duty Diesel Engine Oil	Typical Physical And Chemical Characteristics				
Extra high performance semi-synthetic diesel engine oil formulated					
by using synthetic technology. Provides perfect protection thanks to long	Density, 15°C, kg/L	K.Viscosity, 40°C, mm²/s	K.Viscosity, 100°C, mm²/s	Viscosity Index	Flash Point, °C
term oil intervals in new generation and old trucks, buses, heavy duty type diesel	ASTM D 4052	ASTM D 445	ASTM D 445	ASTM D 2270	ASTM D 92
engine of other sectors and high performance required industrial applications	0,876	99,6	14,6	151	222
Performance Specifications	SAE 10W-40				
C-Oil SAE 10W-40					
Outstanding Power and Performance Full Synthetic Heavy Duty Diesel Engine	Typical Physical And Chemical Characteristics				
Superior performance fully synthetic diesel engine oil formulated					
using ultimate synthetic technology. With its extended service life provides					
excellent protection for heavy duty naturally aspirated or turbocharged	Density, 15°C, kg/L	K.Viscosity, 40°C, mm²/s	K.Viscosity, 100°C, mm²/s	Viscosity Index	Flash Point, °C
diesel engines of modern or old trucks, buses, constructions and the	ASTM D 4052	ASTM D 445	ASTM D 445	ASTM D 2270	ASTM D 92
others in industrial applications working under all hard and climate conditions.	0,867	97,1	14,9	161	226
Performance Specifications	SAE 10W-40				
C-Oil SÜPERX 20W-50					
High Performance Heavy Duty Diesel Engine Oil	Typical Physical And Chemical Characteristics				
Multi-grade, heavy duty diesel engine oil with high qualities, superior					
performance that can be used in all seasons. Also suitable for gasoline					
engines. Used in all buses, trucks, international road transport, tractors,	Density, 15°C, kg/L	K.Viscosity, 40°C, mm²/s	K.Viscosity, 100°C, mm²/s	Viscosity Index	Flash Point, °C
heavy duty transportation vehicles, generators and work machines including	ASTM D 4052	ASTM D 445	ASTM D 445	ASTM D 2270	ASTM D 92
turbo and super charged ones, operating under all road and climate conditions.	0,891	210	21,3	125	236
Performance Specifications	20W-50 API				
C-Oil SAE 15W-40					
Outstanding Performance And Extended Life Heavy Duty Diesel Engine Oil	Typical Physical And Chemical Characteristics				
Heavy duty diesel engine oil designed for new generation modern technology					
diesel engine that improves excellent lubricating function, perfect performance					
long life in hard road and climate conditions. Provides extra performance					
all kinds of diesel or gasoline truck, trailer, bus work machine generators modern	Density, 15°C, kg/L	K.Viscosity, 40°C, mm²/s	K.Viscosity, 100°C, mm²/s	Viscosity Index	Flash Point, °C
vehicles and on combined philo equipment's turbocharged supercharged new	ASTM D 4052	ASTM D 445	ASTM D 445	ASTM D 2270	ASTM D 92
generation engines. By its special formulation and long term oil changes	0,88	107,1	14,4	138	236
Performance Specifications	SAE 15W-40 API				

TRANSMISSION AND DIFFERENTIAL OILS					
C-Oil GEAR OIL 75W-90					
High Quality Synthetic Gear Oil	Typical Physical And Chemical Characteristics				
Fully synthetic heavy duty type gear oil, has long term oil change with high performance. Used safety especially modern edans commercial and off rood vehicle's caterpillar's hard condition running gear boxer with or without synchromesh and in differentials transmissions axles.	Density, 15°C, kg/L	K.Viscosity, 40°C, mm²/s	K.Viscosity, 100°C, mm²/s	Viscosity Index	Flash Point, °C
	ASTM D 4052	ASTM D 445	ASTM D 445	ASTM D 2270	ASTM D 92
	0,866	108,6	15,2	147	198
Performance Specifications	SAE 75W-90 API				
C-Oil GEAR OIL EP MB 80W					
High Quality Automotive Gear Oil	Typical Physical And Chemical Characteristics				
Providing maximum protection automotive gear oil representing high performance it the hardest running conditions of over loading and over pressure. Suitable for car, truck, light truck, commercial and agricultural vehicles and work machines' gear boxes and differentials, axle and last impellent gears Especially supplies Mercedes-Benz and MAN's performance requirements gear oil.	Density, 15°C, kg/L	K.Viscosity, 40°C, mm²/s	K.Viscosity, 100°C, mm²/s	Viscosity Index	Flash Point, °C
	ASTM D 4052	ASTM D 445	ASTM D 445	ASTM D 2270	ASTM D 92
	0,89	85,6	10	95	210
Performance Specifications	SAE 80W				
C-Oil GEAR OIL LS 90					
High Quality Limited Slip Differential Oil	Typical Physical And Chemical Characteristics				
Improved product for using of limited-locked sliding differential systems vehicles and it's equipments. Used for increasing performance of last impellent gear sedans commercial vehicles, buses, agricultural machines, work machines's axle and locked sliding differential.	Density, 15°C, kg/L	K.Viscosity, 40°C, mm²/s	K.Viscosity, 100°C, mm²/s	Viscosity Index	Flash Point, °C
	ASTM D 4052	ASTM D 445	ASTM D 445	ASTM D 2270	ASTM D 92
	0,902	178,6	16,3	95	218
Performance Specifications	SAE 90				
C-Oil GEAR OIL EP 140					
Maximum Protection in Hard Conditions Transmission And Differential Oils	Typical Physical And Chemical Characteristics				
Mineral based automotive gear box lubricants formulated by high technology additive package and extreme pressure agent. Suitable for use in hypoid differentials operating under heavy duty also in gear boxes synchronized gear wheels, chassis lubricating systems, trucks, agriculture and work machines	Density, 15°C, kg/L	K.Viscosity, 40°C, mm²/s	K.Viscosity, 100°C, mm²/s	Viscosity Index	Flash Point, °C
	ASTM D 4052	ASTM D 445	ASTM D 445	ASTM D 2270	ASTM D 92
	0,91	458,6	29,6	90	236
Performance Specifications	SAE 140				
C-Oil GEAR OIL EP 80W-90					
Maximum Protection in Hard Conditions Transmission And Differential Oils	Typical Physical And Chemical Characteristics				
Mineral based automotive gear box lubricants formulated by high technology additive package and extreme pressure agent. Suitable for use in hypoid differentials operating under heavy duty also in gear boxes synchronized gear wheels, chassis lubricating systems, trucks, agriculture and work machines	Density, 15°C, kg/L	K.Viscosity, 40°C, mm²/s	K.Viscosity, 100°C, mm²/s	Viscosity Index	Flash Point, °C
	ASTM D 4052	ASTM D 445	ASTM D 445	ASTM D 2270	ASTM D 92
	0,893	148,3	14,4	96	236
Performance Specifications	SAE 80W-90				
C-Oil GEAR OIL 80W-140					
Advanced Performance Gear Oil	Typical Physical And Chemical Characteristics				

Multipurpose gear oil, improved by over pressure (EP) and wear avoided modern additives. Suitable for multi purpose usage of all cold and hard conditions running that has oil bath brake systems axle, gear systems and brake discs	Density, 15°C, kg/L ASTM D 4052 0,896	K.Viscosity, 40°C, mm²/s ASTM D 445 210,8	K.Viscosity, 100°C, mm²/s ASTM D 445 25,8	Viscosity Index ASTM D 2270 151	Flash Point, °C ASTM D 92 198
<i>Performance Specifications</i>	SAE 80W-140				
C-Oil GEAR OIL 75W-80					
<i>High Quality Synthetic Gear Oil</i>	<i>Typical Physical And Chemical Characteristics</i>				
Fully synthetic heavy duty type gear oil, has long term oil change with high performance. Used safety especially modern sedans commercial and off road vehicle's caterpillar's hard condition running gear boxer with or without synchromesh and in differentials transmissions axles	Density, 15°C, kg/L ASTM D 4052 0,878	K.Viscosity, 40°C, mm²/s ASTM D 445 58,6	K.Viscosity, 100°C, mm²/s ASTM D 445 9,7	Viscosity Index ASTM D 2270 154	
<i>Performance Specifications</i>	SAE 75W-80				
C-Oil GEAR OIL HD 85W-140					
<i>Heavy Duty Transmission And Differential Gear Oils</i>	<i>Typical Physical And Chemical Characteristics</i>				
These are heavy duty gear lubricants resistant against extreme pressure and prepared by special formulation of high performance additives mixing with high quality mineral base oils. They are used in differential systems consisting of conical, hypoid and spiral gears of automobiles, trucks buses heavy duty vehicles, light service commercial vehicles agriculture vehicles and work machines	Density, 15°C, kg/L ASTM D 4052 0,907	K.Viscosity, 40°C, mm²/s ASTM D 445 357,8	K.Viscosity, 100°C, mm²/s ASTM D 445 28,8	Viscosity Index ASTM D 2270 95	Flash Point, °C ASTM D 92 236
<i>Performance Specifications</i>	SAE 85W-140				
C-Oil ATF III					
<i>Superior Performance Automatic Transmission Fluid</i>	<i>Typical Physical And Chemical Characteristics</i>				
High quality, automatic gearbox oil that supply General Motors Dexron III and Ford Mercon specifications. Usable all in GM automatic gearboxer and required Dexron III oil new automatic transmission systems.	Density, 15°C, kg/L ASTM D 4052 0,872	K.Viscosity, 40°C, mm²/s ASTM D 445 36,6	K.Viscosity, 100°C, mm²/s ASTM D 445 7,5	Viscosity Index ASTM D 2270 174	Flash Point, °C ASTM D 92 202
<i>Performance Specifications</i>	GM Dexron III				
C-Oil ATF II					
<i>Superior Performance Automatic Transmission Fluid</i>	<i>Typical Physical And Chemical Characteristics</i>				
It is a multi-purpose automatic transmission fluid having high viscosity index formulated by special package of additives mixed with well refined base oils. It is used for the automatic transmissions and power steering systems and some manual transmissions of passenger vehicles, light commercial vehicles buses trucks and work machines and industrial vehicles working under heavy duty conditions, and in recommended position in special hydraulic systems	Density, 15°C, kg/L ASTM D 4052 0,872	K.Viscosity, 40°C, mm²/s ASTM D 445 35,6	K.Viscosity, 100°C, mm²/s ASTM D 445 7,32	Viscosity Index ASTM D 2270 169	Flash Point, °C ASTM D 92 204
<i>Performance Specifications</i>	GM DEXRON II				
C-Oil Trkt 422					
<i>High Performance Transmission and Hydraulic Oil For Tractors</i>	<i>Typical Physical And Chemical Characteristics</i>				
This is multifunctional power transmission oil providing outstanding performance for the necessities of hydraulic lubricant and especially in transmission systems of tractors. It is used in brake and clutch systems, except for engine, transmission and hydraulic systems, differentials of tractors, agriculture and work machines used in automotive, agriculture and industry sectors	Density, 15°C, kg/L ASTM D 4052 0,891	K.Viscosity, 40°C, mm²/s ASTM D 445 92,21	K.Viscosity, 100°C, mm²/s ASTM D 445 11,3	Viscosity Index ASTM D 2270 110	Flash Point, °C ASTM D 92 228
<i>Performance Specifications</i>	SAE 10W-30 API				



C-Oil Trkt 20W-50					
High Protection and Performance Economic Tractor Engine Oil		Typical Physical And Chemical Characteristics			
Extra quality engine oil improved especially use for agricultural machines diesel engine. Used new and old tractor also, high performance recommended product in all agricultural diesel engines to combineharvester, disinfection machine.	Density, 15°C, kg/L	K.Viscosity, 40°C, mm²/s	K.Viscosity, 100°C, mm²/s	Viscosity Index	Flash Point, °C
	ASTM D 4052	ASTM D 445	ASTM D 445	ASTM D 2270	ASTM D 92
	0,892	164,7	18	121	242
Performance Specifications		SAE 20W-50			
C-Oil Trkt 15W-40					
High Protection and Performance Economic Tractor Engine Oil		Typical Physical And Chemical Characteristics			
Extra quality engine oil improved especially for use agricultural machines diesel engine. Used new and old tractor also, high performance recommended product in all agricultural diesel engines to combineharvester, disinfection machine.	Density, 15°C, kg/L	K.Viscosity, 40°C, mm²/s	K.Viscosity, 100°C, mm²/s	Viscosity Index	Flash Point, °C
	ASTM D 4052	ASTM D 445	ASTM D 445	ASTM D 2270	ASTM D 92
	0,884	121	15,2	130	230
Performance Specifications		SAE 15W-40			
C-Oil ANTIFREEZE COOLANT FLUID					
Superior Performance and Extended Life Antifreeze Coolant Fluid		Typical Physical And Chemical Characteristics			
C-Oil antifreeze is high performance, no silicate containing, mono ethylene glycol based engine coolant that is prepared by using Organic Acid Technology (OAT). Formulated for the cooling systems of all diesel and gasoline vehicles and for long-distance vehicles. Also, it is multipurpose coolant fluid for not only heavy- duty vehicles but also usable in all radiator types of gasoline vehicles.		Boiling Point, °C	Freezing Point, °C	Density, 20°C, kg/L	
	ASTM D 1120	ASTM D 1177	ASTM D 1122	ASTM D 1287	100%
	182	-	1,12	-	% 50 (Water Blend)
	-	-37 (-18:%33)	-	8,61	
Performance Specifications					
C-Oil HYDRAULIC BRAKE OIL-DOT 3 & DOT 4		Typical Physical And Chemical Characteristics			
It is an in quality brake hydraulic exhibiting excellent performance in hydraulic brake systems and clutches of motorized vehicles. Ensures excellent power transmission and safe operation thanks to its high boiling point and maximum protection as result of special additive contents.		pH VALUE	K.Viscosity, 100°C, mm²/s	Boiling Point, °C	
		SAE	ASTM D 445	-	
	DOT-3	7-11,5	1,5	205	
Performance Specifications		DOT-4	7-11,5	1,5	232
INDUSTRIAL OILS					
C-Oil Hdrlk HYDRAULIC SYSTEM OILS					
High Performance Hydraulic System Oils		Typical Physical And Chemical Characteristics			
These are high-performance hydraulic system oils produced by the mixture of well-refined base oil and well-qualified additives.They are used in fixed and transportable hydraulic systems, machine tool, hydraulic presses, geared and piston pumps, in screwed type compressor in accordance with manufacturer's instructions and recommendations, industrial work machines, mobile construction elements and gear boxes.	Density, 15°C, kg/L	K.Viscosity, 40°C, mm²/s	K.Viscosity, 100°C, mm²/s	Viscosity Index	Flash Point, °C
	ASTM D 4052	ASTM D 445	ASTM D 445	ASTM D 2270	ASTM D 92
	0,867	22	4,3	94	190
	0,876	32	5,4	101	216
	0,878	46	6,7	104	224
	0,887	68	8,6	95	236
	0,89	100	11,3	97	238
	0,892	150	14,9	95	254
Performance Specifications		DIN 51515			
GREASES					
C-Oil BEARING COMPLEX GREASE					

High Performance Bearing Complex Grease	Typical Physical And Chemical Characteristics					
Mineral based lithium complex grease with high performance						
and long service life under high temperature conditions. Provides						
extra performance for many industrial applications such as industry,	NLGI No	Soap Type	Penetration, Worked, 25°C, 0.1 mm	Dropping Point, °C		
automotive, mining, construction, iron-steel industries, marine, also hard	-	-	-	ASTM D 566		
working conditions in high temperature, heavy and shock loading. The EPX-2 Grease is	1	Lithium & Calcium Complex	310-340	260		
suitable for vibrating operation applications thanks to molybdenum disulphide contents	2	Lithium & Calcium Complex	265-295	260		
Performance Specifications	Complex Grease					
C-Oil LITHIUM CALCIUM COMPLEX GREASE						
Extra Quality Multipurpose Water Resistant Grease	Typical Physical And Chemical Characteristics					
Multi purpose water resistant Grease, provides effective lubricating						
to wide temperature span working and over loading conditions. Usable	NLGI No	Soap Type	Penetration, Worked, 25°C, 0.1 mm	Dropping Point, °C		
for flat and ball bearings, agricultural transportation equipments, light	-	-	-	ASTM D 566		
commercial vehicles, sliding, ball or turning bearings under load and also	1	Lithium & Calcium Complex	310-340	260		
chassis, central lubricating.	2	Lithium & Calcium Complex	265-295	260		
Performance Specifications	Resistant Grease					
C-Oil LITHIUM CALCIUM EP GREASE						
Extra Performance Extreme Pressure Lithium & Calcium Grease	Typical Physical And Chemical Characteristics					
Multi purpose Grease, provides extra performance in over pressure and sudden load implied	Colour	NLGI No	Penetration, Worked, 25°C, 0.1 mm	Soap Type		Dropping Point, °C
applications Usable in general lubricating of sliding ball and turning bearing, wheel bearing ,	-	-	ASTM D 217	-		ASTM D 566
under load , chassis lubricating, for transportation vehicles and agricultural equipment	Light Brown	0	355-385	Lithium & Calcium		185
general lubrication. For sudden loads and vibration by temperature	Light Brown	1	310-340	Lithium & Calcium		185
variation, application c-oil Molybdenum Lithium Calcium Grease must be preferred.	Light Brown	2	265-295	Lithium & Calcium		185
	Light Brow	3	220-250	Lithium & Calcium		185
Performance Specifications	Calcium Grease					
C-Oil BEARING GREASE						
Extra Performance Lithium Based Bearing Grease	Typical Physical And Chemical Characteristics					
Grease with lithium soap prepared from by quality base oils and	Colour	NLGI No	Worked, 25°C, 0.1 mm	Soap Type		Dropping Point, °C
additives used in various industries. Used in automobiles, commercial	-	-	ASTM D 217	-		ASTM D 566
and off-road vehicles, agricultural and working machines of wheel	Light Brown	0	400-430	Lithium		196
bearings, central lubrication systems, ball and sliding bearings of	Light Brown	1	355-385	Lithium		196
automobiles, at not working under heavy load and high temperature also	Light Brown	2	310-340	Lithium		196
used safely in electrical engine rollers.	Light Brown	3	265-295	Lithium		196
Performance Specifications	Bearing Grease					



www.ointmentmedical.com



www.celikc.com



www.c-oil.com.tr



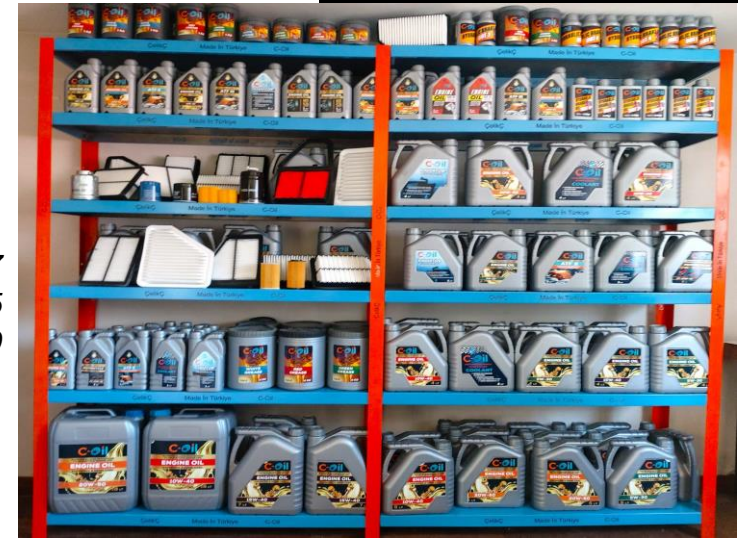
Mineral oil Made in Turkey

Telephone

905318362647

905425412405

905353158780



www.c-oil.com.tr

info@c-oil.com.tr



Togg